

MULTI-AXIS INSPECTION SYSTEMS

Data Sheet No. 051030 Page 1 of 2



The Midas NDT Systems range of multi-axis inspection systems are designed for customers with complex geometry components. Systems to date have been manufactured with up to eleven axes of movement under full computer control.



Floor standing or sub-surface configurations are available, the sub-surface option offering ease of component loading.

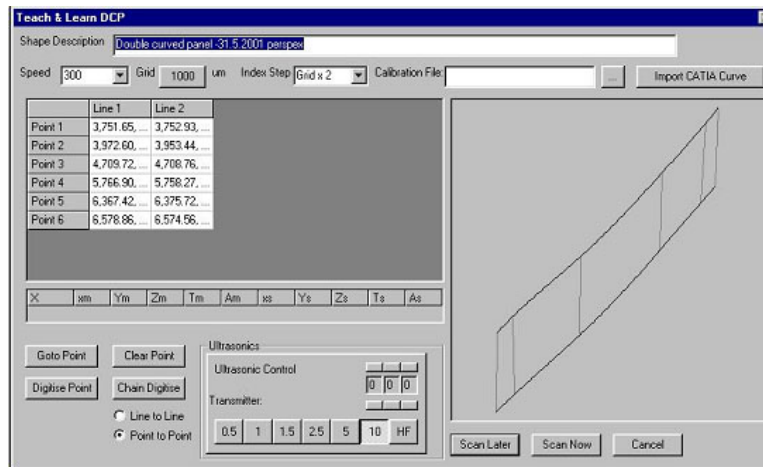
Combined use of the Z (height), Y (width) and T1 (vertical angulation) axes of movement allows for the total inspection of single curve components. The additional combined use of the X2 (secondary length) and T2 (horizontal tilt) axes allows for the total inspection of double curved components.



Views of the multi-axis scanning heads



System Examples



A full teach and learn facility is available, this facility allows the operator to create complex shaped component files. All parameters (including ultrasonic settings) can be stored for inspection at a later date or for repeat inspections. For complex shapes the option is also available to import shape information from the component CATIA information.

Standard System Parameters

	X	Z	Y	T	A	X2
Speed	750 mm/sec	500mm/sec	500mm/sec	180°/sec	180°/sec	200mm/sec
Resolution	0.01mm	0.01mm	0.01mm	0.01°	0.01°	0.01mm
Repeatability	0.2mm	0.2mm	0.1mm	0.05°	0.05°	0.05mm
Parallelism	0.5mm	0.5mm	-	-	-	-
Accuracy	0.25mm	0.25mm	0.15mm	0.1°	0.1°	0.1mm
V/Linearity	0.25 mm					
Straightness	0.25 mm					

Systems are supplied with Zeus Data Acquisition and Evaluation Software and equipped with the latest standard Midas NDT Systems ultrasonic instrumentation package. The ultrasonic package provides a 95dB dynamic range over frequencies between 200 KHz and 45 MHz, allowing a customer to capture all necessary data in a single inspection.